

90.0

85.0

2SIL

2K1
1K1
1K1
1K1
2K4BC 807
BC 817Red
2K1
47K2 Con
ST 5
35 deg4 Con
ST 5
35 deg4 Con
ST 5
35 degFUSE HOLDER
ATOSMCJ
26A

ES3J

SMCJ
26A24
5V
0.1F

LS973D

4K7
22K
33K
100F
35V

470K

MCP2551

PE-
1812220K
100K
100K
100K

0.01F

Red
10K2K1
1K1
1K1SSI-88342
241P

10K

6 SIL

470K
1K
1K
1K2K1
47K
1K
1K

7 SIL

BC
8072K2
10K
470K

Red

2SIL

2SIL

100F
35V

SMS2100

470F
25V15
33C
Hz

12 MHz

470K

33K

10K

30K3
Green

20K3

10K3

47K

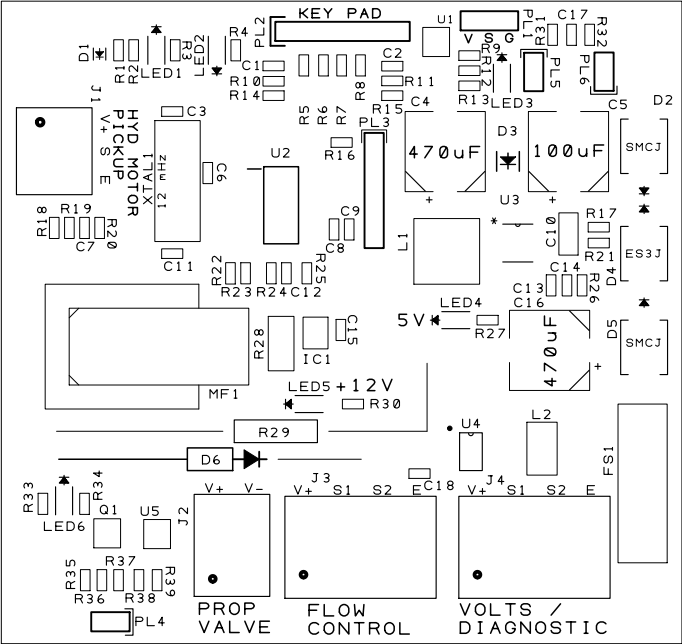
2K1

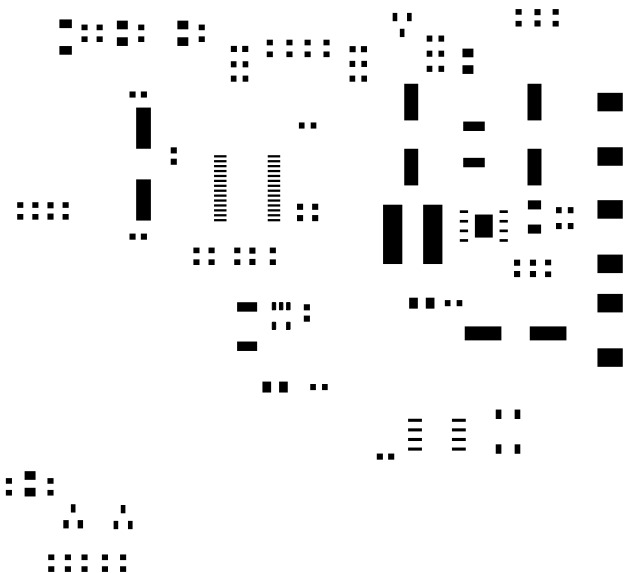
470K

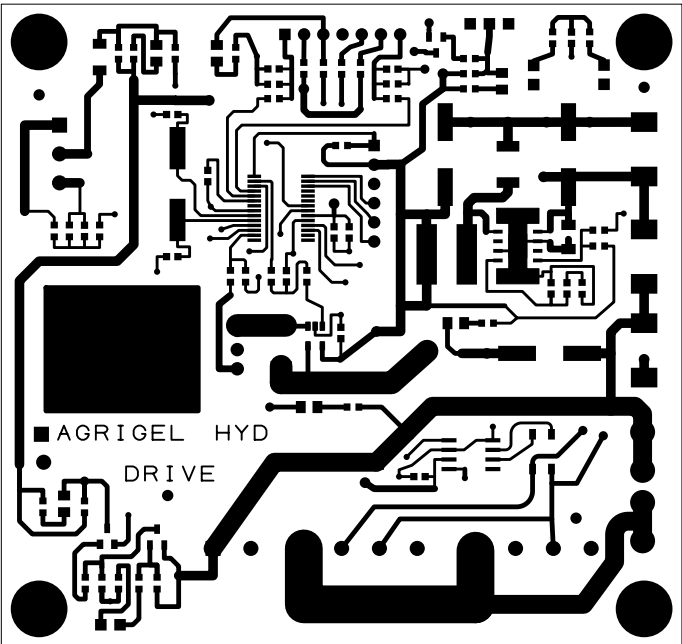
3 Con
ST 3.8
35 deg2K1
1K
5K6MOSFET
STP36
NF06L

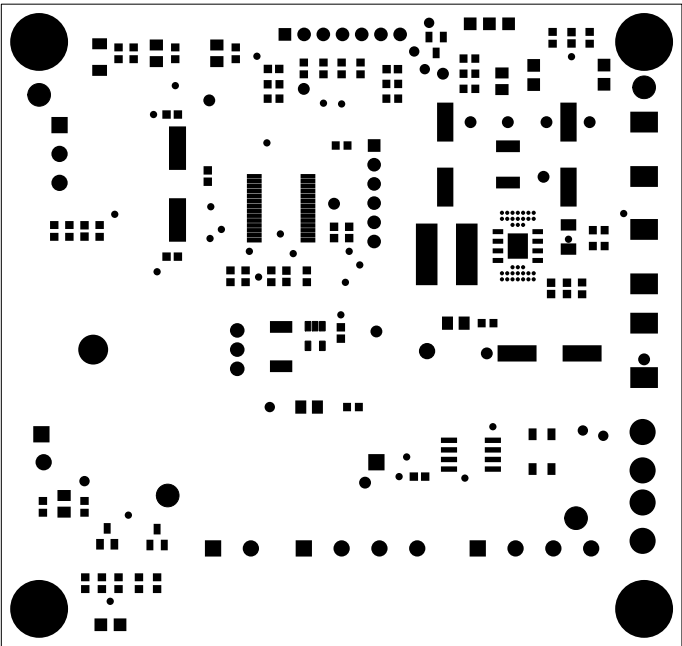
MUR120RLG

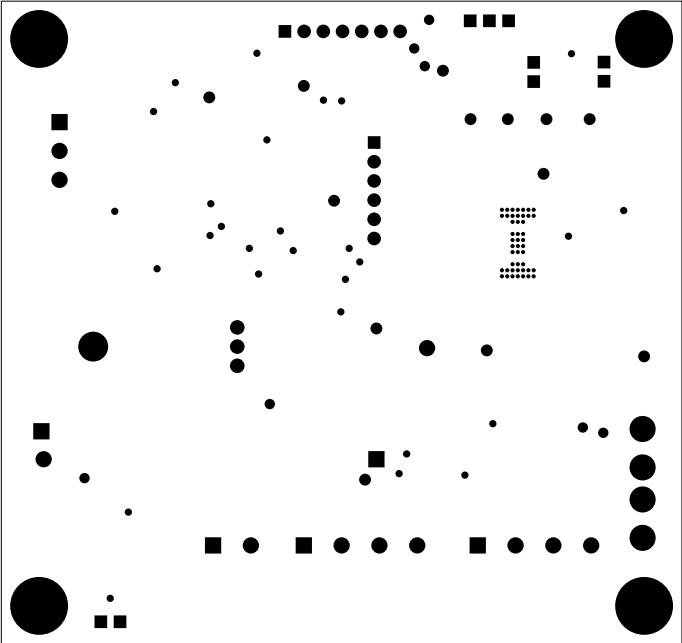
12FR010E











HYDRAULIC DRIVE 02.01

AGRI GEL ©

